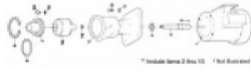


[Home](#) > [Hayward](#) > [Hayward](#) > [Pumps](#) > [Vertical Pumps](#) > 1S2GX0008

## Hayward 1S2GX0008 Vertical Pump

Item#: 610377709248 | Model#: 1S2GX0008 Series#: S

**Description:**

CPVC VERTICAL IMMERSIBLE PUMP 1/3 HP 115/230 1 PHASE

Price: **USD \$1585<sup>75</sup>**[Buy Now](#)

### Technical Specification

**Series Data**

<b>Pump Head</b>	CPVC (1/15-5 HP)
<b>Pipe Connection</b>	Threaded NPT
<b>Fume Barrier</b>	PTFE, Protects Motor and Bearings from Corrosion Damage
<b>O-Rings</b>	FPM
<b>Performance</b>	Flow Rates from 5 to 130 GPM with TDHs of up to 115 Feet. S-Series Motors and Pumps are Matched for Non-Overloading, Continuous Duty Performance Throughout the Entire Pump Performance Range.
<b>Motors</b>	Matched for Non-Overloading, Continuous Duty Performance Throughout the Entire Pump Performance Range. or 208-230/460 VAC and are Heavy Duty TEFC, Epoxy Painted and Rated for Continuous Service. Also Available with Wash Down and Explosion Proof Motors.
<b>Hp Rating</b>	1/3 HP
<b>Inlet (inch)</b>	1" MNPT
<b>Discharge</b>	3/4" FNPT

**Product Dimensions**

<b>Weight</b>	32.00 lb
<b>Width</b>	160.00 mm, 6.30 in
<b>Height</b>	160.00 mm, 6.30 in
<b>Length</b>	557.00 mm, 21.93 in

### Technical Documents

Document Title	Download
Webster S Series Vertical Pump Catalog Cut Sheet	<a href="#">Click Here</a> to Download

### Accessories

ID	Short Details	Price
<a href="#">EXT24FVD1S2</a>	24 INCH INLET EXTENSION PIPE WITH 1 INCH FOOT VALVE	\$498.30
<a href="#">EXT36FVD1S2</a>	36 INCH INLET EXTENSION PIPE WITH 1 INCH FOOT VALVE	\$553.70

### Parts List

Position	Part Number	Part Details	Quantity	Price
*	<a href="#">1S2ZX0008</a>	CPVC Pump Head Only	1	\$1017.75
2	<a href="#">4677</a>	SHAFT ASSEMBLY	1	<del>\$294.80</del> \$262.37
3	<a href="#">U30-893SS</a>	SCREW	2	\$7.70
4	<a href="#">U29-112</a>	FUME SEAL (PTFE)	10	\$30.20
7	<a href="#">4615</a>	NUT	1	\$75.00

10	<a href="#">U30-74SS</a>	BOLT	4	\$5.20
11	<a href="#">U43-62SS</a>	WASHER	4	\$2.85

