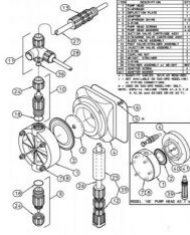


[Home](#) > [Pulsafeeder](#) > [Pulsatron](#) > [Pumps](#) > [Metering Pumps](#) > [Electronic Metering](#) > [LB64SA-PTC1-XXX](#)

Pulsatron LB64SA-PTC1-XXX Electronic Metering Pump

Item#: LB64SA-PTC1-XXX | Model#: LB64SA-PTC1-XXX Series#: LBXXXX-XXXX-XXX



Description:

LB64SA-PTC1-XXX Pulsatron Electronic Metering Pump Series A+. Flow Rate (GPD:30, GPH:1.25, LPH:4.7), Pressure Rating PSI:100/BAR:7, Stroke Rate SPM:125, Standard Valve Size:1, Maximum Viscosity cps:1000

Price: USD ~~\$555.00~~ **\$323.19**

[Buy Now](#)

Technical Specification

LB64SA-PTC1-XXX Product Specific Data

Model	Flow Rate (GPD:30, GPH:1.25, LPH:4.7), Pressure Rating (PSI:100, BAR:7), Stroke Rate(SPM:125), Standard Valve Size:1, Max. Viscosity(cps:1000)
Controls	(Manual Control, Analog Adjustment), (100:1 Turndown Ratio), (10:1 Stroke Length, 10:1 Frequency)
Electrical	115 VAC, 60Hz
Liquid End Configuration	GFPPL / TFE / Ceramic
Connection Sizes	Tubing .25" I.D. x .38" O.D. Standard for pumps from 20 - 45 GPD
Options	Standard Pump - No Options

Series Data

Pump Head Materials	GFPPL, PVC, PVDF, 316 SS
Fitting Material Available	GFPPL, PVC, PVDF
Bleed Valve	Same as fitting and check valve selected (except 316SS)
Stroke Frequency	0:10 / 100:1 by Model
Turndown Ratio	
Stroke Length	10:1
Turn-Down Ratio	
Seat O-Rings Available	PTFE, CSPE, Viton
Balls Available	Ceramic, PTFE, 316 SS, Alloy C
Diaphragms	PTFE-faced CSPE-backed
Power Input	115 VAC - 50/60 HZ -1 ph, 230 VAC - 50/60 HZ - 1 ph
Peak Input Power	130 Watts, Average Input Power At Max SPM: 50 Watts
Average Current Draw	115 VAC: Amps - 0.6, 230 VAC: Amps - 0.3
Reproducibility	± 3% at maximum capacity
Average Input Power @ Max SPM	50 Watts
Connection Piping	1/4" FNPT
Strokes/Minute (SPM)	125 / 250 by Model
Product Options	Optional Control: External pace with auto/manual selection Optional ratio: 1000:1 by model
Accessories	Dampeners Gauges KOP Kits Pre-Engineered Systems Process Controllers Tanks
Tubing Available	Clear PVC, White PE, PVDF

Product Dimensions

Weight	10.00 lb
Width	7354.82 mm, 289.56 in
Height	6064.50 mm, 238.76 in
Length	8645.14 mm, 340.36 in

Technical Documents

Document Title	Download
----------------	----------

BROCHURES	Click Here to Download
PULSAtron Series A Plus Tech Sheet	Click Here to Download
Tech Sheet (ES)	Click Here to Download
Tech Sheet (PT)	Click Here to Download
PULSAtron Series A Plus IOM	Click Here to Download

Parts List

Position	Part Number	Part Details	Quantity	Price
1	L0200400-FPP	L0200400-FPP - PUMP HEAD for Electronic Metering by Pulsafeeder	1	\$64.40
2	L0301100-THY	DIAPHRAGM(TFE/HYP) ASY, 1.25"	1	\$48.20
3	L2100400-FPP	DEFLECTION PLATE, 1.250 DIAPH	1	\$7.70
4	L0401300-FPP	ADAPTOR(BLK), 1.25IN. HSG#1	1	\$24.00
5	L3900100-000	L3900100-000 - DIAPHRAGM SHIMS for Electronic Metering by Pulsafeeder	2	\$10.40
6	L1502000-EPB	L1502000-EPB - O-RING, EMP/HOUSING for Electronic Metering by Pulsafeeder	1	\$2.80
7	L3900200-000	L3900200-000 - PUMP HEAD SCREWS for Electronic Metering by Pulsafeeder	4	\$31.70
8	L3900500-000	L3900500-000 - PUMP HEAD WASHERS for Electronic Metering by Pulsafeeder	4	\$16.40
18	L1501300-TFE	L1501300-TFE - SUCTION/DISCHARGE O-RING for Electronic Metering by Pulsafeeder	2	\$7.50
25	L9906700-000	L9906700-000 - Weight(CER) , Stariner for Chem-Tech Series by Pulsafeeder	1	\$7.50
36	L1501200-TFE	L1501200-TFE - BLEED VALVE O-RING for Electronic Metering by Pulsafeeder	1	\$7.50
51	L0500300-080	HOUSING(BLU), #1/.080 PUMP	1	\$64.40
52	L9906201-000	L9906201-000 - ELECTRONIC CONTROL BOARD (DUAL FUNCTION) for Electronic Metering by Pulsafeeder	1	\$138.10
53	L0601000-000	L0601000-000 - CONTROL PANEL for Electronic Metering by Pulsafeeder	1	\$34.00
55	L2000200-080	SHAFT,HSG 1 STK LGTH ADJ FEM	1	
56	L2000400-PBT	L2000400-PBT - MALE ADJUSTMENT SHAFT for Electronic Metering by Pulsafeeder	1	\$7.70
58	L1502000-EPB	L1502000-EPB - O-RING, EMP/HOUSING for Electronic Metering by Pulsafeeder	1	\$2.80
59	L1500100-EPB	L1500100-EPB - CONTROL PANEL O-RING for Electronic Metering by Pulsafeeder	1	\$8.80
60	L1500700-NTR	L1500700-NTR - SECONDARY SEAL for Electronic Metering by Pulsafeeder	1	\$2.80
61	L9900700-000	L9900700-000 - Connector, Strain relief for Chem-Tech Series by Pulsafeeder	1	\$3.90
62	L9700300-000	L9700300-000 - POWER CORD for Electronic Metering by Pulsafeeder	1	\$31.70
63	L9707300-000	L9707300-000 - OVERLOAD DEVICE (EXTERNAL PACED MODELS) for Electronic Metering by Pulsafeeder	1	\$7.70
64	L3900700-000	L3900700-000 - CONTROL PANEL SCREW (KIT) for Electronic Metering by Pulsafeeder	4	\$5.50
65	L1500800-NTR	L1500800-NTR - GROMMET STROKE RATE/SWITCH for Electronic Metering by Pulsafeeder	1	\$6.00
71	L1900300-FPP	L1900300-FPP - STROKE LENGTH KNOB for Electronic Metering by Pulsafeeder	1	\$9.80
72	L9800200-188	L9800200-188 - CONTROL PANEL SCREWS for Electronic Metering by Pulsafeeder	1	\$2.80
76	L1500900-NTR	L1500900-NTR - GROMMET STROKE LENGTH for Electronic Metering by Pulsafeeder	1	
79	L9801900-STL	L9801900-STL - EPM MOUNTING WASHER for Electronic Metering by Pulsafeeder	4	\$2.20

85	L9700200-000	L9700200-000 - STOP/FUNC. CORDS for Electronic Metering by Pulsafeeder	1	\$26.80
107	L3901000-000	L3901000-000 - GROUND LUG KIT (CONTAINS 1 BOLT AND 3 NUTS) for Electronic Metering by Pulsafeeder	1	\$3.90
108	L1900800-000	L1900800-000 - KNOB, STROKE RATE/SWITCH WITH SET SCREW for Electronic Metering by Pulsafeeder	1	

