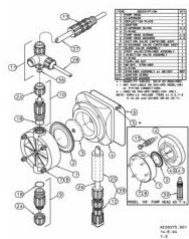
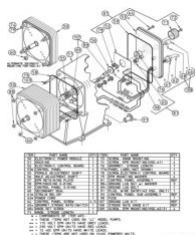


[Home](#) > [Pulsafeeder](#) > [Pulsatron](#) > [Pumps](#) > [Metering Pumps](#) > [Electronic Metering](#) > LD02SA-KTC1-520

Pulsatron LD02SA-KTC1-520 Electronic Metering Pump

Item#: LD02SA-KTC1-520 | Model#: LD02SA-KTC1-520 Series#: LDXXXX-XXXX-XXX



Description:

Pulsafeeder Pulsatron Pump LD02SA-KTC1-520 Electronic Metering Series C+. 0.25 gph / 6 gpd (0.9 lph), Max pres.: 80 psi (5.6 bar), Connection Size Tubing .25

Price: **USD \$778⁰⁰**

[Buy Now](#)

Technical Specification

LD02SA-KTC1-520 Product Specific Data

MODELS	0.25 gph / 6 gpd (0.9 lph), Max pres.: 80 psi (5.6 bar)
CONTROLS	Manual
ELECTRICAL	115 Volt / 50-60Hz
LIQUID END MATERIALS:Pump Head & Fittings/Seats & O-rings/Balls	PVDF / TFE / Ceramic
CONNECTION SIZES	Tubing .25
SUFFIX CODES	Five Function Degas Valve

Series Data

Pump Head Materials	GFPPL, PVC, PVDF, 316 SS
Fitting Material Available	GFPPL, PVC, PVDF
Bleed Valve	Same as fitting and check valve selected (except 316SS)
Stroke Length	10:1
Turn-Down Ratio	
Seat O-Rings Available	PTFE, CSPE, Viton
Balls Available	Ceramic, PTFE, 316 SS, Alloy C
Diaphragms	PTFE-faced CSPE-backed
Tubing Available	Clear PVC, White PE, PVDF
Power Input	115 VAC - 50/60 HZ -1 ph, 230 VAC - 50/60 HZ - 1 ph
Peak Input Power	130 Watts, Average Input Power At Max SPM: 50 Watts
Average Current Draw	115 VAC: Amps - 0.6, 230 VAC: Amps - 0.3
Reproducibility	± 3% at maximum capacity
Maximum Viscosity (CPS)	1000
Maximum Stroke Frequency (SPM)	125
Connections Piping Size	1/4" FNPT
Product Options	Optional Control: External pace with auto/manual selection
Accessories	Dampeners , Gauges , KOP Kits , Pre-Engineered Systems , Process Controllers , Tanks

Product Dimensions

Weight	10.00 lb
Width	7354.82 mm, 289.56 in
Height	6064.50 mm, 238.76 in
Length	8645.14 mm, 340.36 in

Technical Documents

Document Title	Download
Product Brochure	Click Here to Download
Technical Documents	Click Here to Download

Parts List

Position	Part Number	Part Details	Quantity	Price
1	L0200900-PVD	L0200900-PVD - PUMP HEAD for Electronic Metering by Pulsafeeder	1	\$101.70
2	L0300900-THY	DIAPHRAGM(TFE/HYP) ASY .750"	1	\$41.80
3	L2100200-FPP	DEFLECTION PLATE, .750 DIAPH	1	\$6.00
4	L0401100-FPP	ADAPTOR(BLK), .75IN. HSG#1	1	\$20.40
5	L3900100-000	L3900100-000 - DIAPHRAGM SHIMS for Electronic Metering by Pulsafeeder	2	\$10.40
6	L1502000-EPB	L1502000-EPB - O-RING, EMP/HOUSING for Electronic Metering by Pulsafeeder	1	\$2.80
7	L3900500-000	L3900500-000 - PUMP HEAD for Electronic Metering by Pulsafeeder	4	\$16.40
8	L3900500-000	L3900500-000 - PUMP HEAD for Electronic Metering by Pulsafeeder	4	\$16.40
18	L1501300-TFE	L1501300-TFE - SUCTION/DISCHARGE O-RING for Electronic Metering by Pulsafeeder	2	\$7.50
25	L9906700-000	L9906700-000 - Weight(CER) , Stariner for Electronic Metering by Pulsafeeder	1	\$7.50
36	L1501200-TFE	L1501200-TFE - BLEED VALVE O-RING for Electronic Metering by Pulsafeeder	1	\$7.50
51	L0500300-040	L0500300-040 - HOUSING for Electronic Metering by Pulsafeeder	1	
52	L9906201-000	L9906201-000 - ELECTRONIC CONTROL BOARD (DUAL FUNCTION) for Electronic Metering by Pulsafeeder	1	\$138.10
53	L0601000-000	L0601000-000 - CONTROL PANEL for Electronic Metering by Pulsafeeder	1	\$34.00
55	L2000200-040	L2000200-040 - FEMALE ADJUSTMENT SHAFT for Electronic Metering by Pulsafeeder	1	\$7.50
56	L2000400-PBT	L2000400-PBT - MALE ADJUSTMENT SHAFT for Electronic Metering by Pulsafeeder	1	\$7.70
58	L1502000-EPB	L1502000-EPB - O-RING, EMP/HOUSING for Electronic Metering by Pulsafeeder	1	\$2.80
59	L1500100-EPB	L1500100-EPB - CONTROL PANEL O-RING for Electronic Metering by Pulsafeeder	1	\$8.80
62	L9700300-000	L9700300-000 - POWER CORD for Electronic Metering by Pulsafeeder	1	\$31.70
63	L9707300-000	L9707300-000 - OVERLOAD DEVICE (EXTERNAL PACED MODELS) for Electronic Metering by Pulsafeeder	1	\$7.70
64	L3900700-000	L3900700-000 - CONTROL PANEL SCREW (KIT) for Electronic Metering by Pulsafeeder	4	\$5.50
65	L1500800-NTR	L1500800-NTR - GROMMET STROKE RATE/SWITCH for Electronic Metering by Pulsafeeder	1	\$6.00
71	L3900700-000	L3900700-000 - CONTROL PANEL SCREW (KIT) for Electronic Metering by Pulsafeeder	1	\$5.50
72	L9800200-188	L9800200-188 - CONTROL PANEL SCREWS for Electronic Metering by Pulsafeeder	1	\$2.80
76	L1500900-NTR	L1500900-NTR - GROMMET STROKE LENGTH for Electronic Metering by Pulsafeeder	1	\$2.20
79	L9801900-STL	L9801900-STL - EPM MOUNTING WASHER for Electronic Metering by Pulsafeeder	1	\$2.20
85	L9700200-000	L9700200-000 - STOP/FUNC. CORDS for Electronic Metering by Pulsafeeder	1	\$26.80
107	L3901000-000	L3901000-000 - GROUND LUG KIT (CONTAINS 1 BOLT AND 3 NUTS) for Electronic Metering by Pulsafeeder	1	\$3.90

108	L1900800-000	L1900800-000 - KNOB, STROKE RATE/SWITCH WITH SET SCREW for Electronic Metering by Pulsafeeder	2	\$9.80
-----	------------------------------	--	---	--------