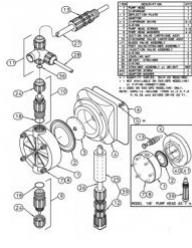
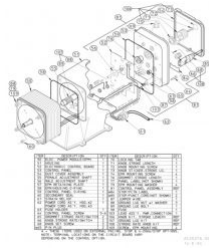


[Home](#) > [Pulsafeeder](#) > [Pulsatron](#) > [Pumps](#) > [Metering Pumps](#) > [Electronic Metering](#) > [LE12SA-KTC1-130](#)

## Pulsatron LE12SA-KTC1-130 Electronic Metering Pump

Item#: LE12SA-KTC1-130 | Model#: LE12SA-KTC1-130 Series#: LEXXXX-XXXX-XXX



### Description:

Series E Pulsafeeder Pulsatron LE12SA-KTC1-130 Electronic Metering Pump internally dampened to reduce noise which makes it very acceptable for household installations. Pump Head & Fittings/Seats & O-rings/Balls: PVDF/TFE/Ceramic (Consult factory for J7 or

Price: **USD \$878<sup>00</sup>**

[Buy Now](#)

## Technical Specification

### LE12SA-KTC1-130 Product Specific Data

<b>MODELS</b>	0.21 gph 5 gpd ( 0.8 lph) max pres.: 250 PSI (17 BAR)
<b>CONTROLS</b>	No Options Available
<b>ELECTRICAL</b>	115 Volt / 50-60Hz
<b>LIQUID END MATERIALS:Pump Head &amp; Fittings/Seats &amp; O-rings/Balls</b>	PVDF / TFE / Ceramic (not available on J7 or H8)
<b>CONNECTION SIZES</b>	Tubing .25" I.D. x .38" O.D. / .25" Ball, 0 - 1.88 GPH
<b>SUFFIX CODES</b>	PVDF Tubing

### General Data

<b>Pump Head Materials</b>	GFPPL, PVC, PVDF, 316 SS
<b>Fitting Material Available</b>	GFPPL, PVC, PVDF
<b>Bleed Valve</b>	Same as fitting and check valve selected (except 316SS)
<b>Turndown Ratio</b>	100:1
<b>Seat O-Rings Available</b>	PTFE, CSPE, Viton
<b>Balls Available</b>	Ceramic, PTFE, 316 SS, Alloy C
<b>Diaphragms</b>	PTFE-faced CSPE-backed
<b>Tubing Available</b>	Clear PVC, White PE, PVDF
<b>Power Input</b>	115 VAC - 50/60 HZ -1 ph, 230 VAC - 50/60 HZ - 1 ph
<b>Peak Input Power</b>	300 Watts, Average Input Power At Max SPM: 130 Watts
<b>Average Current Draw</b>	115 VAC: Amps - 1.0, 230 VAC: Amps - 0.5
<b>Accessories</b>	Dampeners , Gauges , KOP Kits , Pre-Engineered Systems , Process Controllers , Tanks

### Product Dimensions

<b>Weight</b>	10.00 lb
<b>Width</b>	289.56 mm, 11.40 in
<b>Height</b>	238.76 mm, 9.40 in
<b>Length</b>	340.36 mm, 13.40 in

## Technical Documents

Document Title	Download
Technical Data	<a href="#">Click Here</a> to Download
Product Brochure	<a href="#">Click Here</a> to Download

## Parts List

Position	Part Number	Part Details	Quantity	Price
106	<a href="#">L3900900-000</a>	KIT,STROKE LENGTH KNOB	1	\$14.10
107	<a href="#">L3901000-000</a>	KIT, PARTS, GROUND LUGS	1	\$3.30
108	<a href="#">L1900800-000</a>	KNOB ASY, W/SET SCREW	2	\$8.30
18	<a href="#">L1501300-TFE</a>	O-RING(TFE),VLV. GASKET, 2-115	1	\$6.70
5	<a href="#">L3900100-000</a>	PARTS KIT, DIAPHRAGM/SHIMS	1	\$8.80
56	<a href="#">L2000300-PBT</a>	SHAFT(PBT),HSG2/3 STK ADJ MALE	1	\$6.70
60	<a href="#">L1500700-NTR</a>	O-RING(NTR),#2-109, SECONDARY	1	\$1.90
63	<a href="#">L9700700-250</a>	CKT BRKR,250-50/60, 2.5 AMP	1	\$29.80
64	<a href="#">L9800300-188</a>	SCREW,#8 X 1.5"LG.SELF-TAP PHP	5	\$2.00
65	<a href="#">L1500800-NTR</a>	GROM,STROKE RATE/SWITCH	2	\$5.00
76	<a href="#">L1500900-NTR</a>	GROMMET (NTR), STROKE LENGTH	1	\$1.90
85	<a href="#">L9700200-000</a>	CORD, 10-FOOT SIGNAL STANDARD	3	\$23.80
92	<a href="#">L9700800-000</a>	PROTECTIVE BOOT,CKT BRKR	1	\$8.30