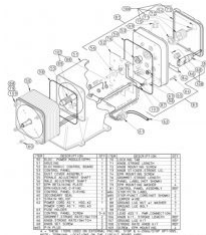
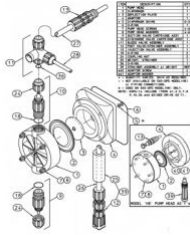


[Home](#) > [Pulsafeeder](#) > [Pulsatron](#) > [Pumps](#) > [Metering Pumps](#) > [Electronic Metering](#) > [LVB3MB-VTT5-XXX](#)

## Pulsatron LVB3MB-VTT5-XXX Electronic Metering Pump

Item#: LVB3MB-VTT5-XXX | Model#: LVB3MB-VTT5-XXX Series#: LVXXXX-XXXX-XXX



### Description:

Pulsafeeder Pulsatron LVB3MB-VTT5-XXX Series HV Electronic Metering Pumps. Pump Head & Fittings/Seats & O-rings/Balls: PVC / TFE / TFE - LVB3 & F4 only

Price: USD ~~\$1243<sup>00</sup>~~ \$738<sup>34</sup>

[Buy Now](#)

## Technical Specification

### LVB3MB-VTT5-XXX Product Specific Data

<b>MODELS</b>	0.50 gph / 12 gpd ( 1.9 lph) max pres.: 150 PSI (10 BAR)
<b>CONTROLS</b>	4-20mADC Direct, w / Stop
<b>ELECTRICAL</b>	230 Volt / 50-60Hz / 1ph w ith 6' (1.8m) 3-wire US Plug
<b>LIQUID END MATERIALS:Pump Head &amp; Fittings/Seats &amp; O-rings/Balls</b>	PVC / TFE / TFE - LVB3 & F4 only
<b>CONNECTION SIZES</b>	Tubing (S) .50" I.D. x .75" O.D. / .38" I.D. x .50" O.D. - LVB3 & F4 only
<b>SUFFIX CODES</b>	No Additional Options

### Series Data

<b>Pump Head Materials</b>	GFPPL, PVC
<b>Fitting Material Available</b>	GFPPL, PVC
<b>Turndown Ratio</b>	100:1
<b>Seat O-Rings Available</b>	PTFE, CSPE, Viton
<b>Balls Available</b>	PTFE-faced CSPE-backed
<b>Diaphragms</b>	Clear PVC, White PE, PVDF
<b>Tubing Available</b>	115 VAC - 50/60 HZ -1 ph, 230 VAC - 50/60 HZ - 1 ph
<b>Power Input</b>	300 Watts, Average Input Power At Max SPM: 130 Watts
<b>Peak Input Power</b>	300 Watts, Average Input Power At Max SPM: 130 Watts
<b>Average Current Draw</b>	115 VAC: Amps - 1.0, 230 VAC: Amps - 0.5
<b>Accessories</b>	KOP Kits , Gauges , Dampeners , Pressure Relief Valves , Tanks , Pre-Engineered Systems , Process Controllers

### Product Dimensions

<b>Weight</b>	25.00 lb
<b>Width</b>	289.56 mm, 11.40 in
<b>Height</b>	238.76 mm, 9.40 in
<b>Length</b>	340.36 mm, 13.40 in

## Technical Documents

Document Title	Download
Product Brochure	<a href="#">Click Here</a> to Download
Technical Data	<a href="#">Click Here</a> to Download

## Parts List

Position	Part Number	Part Details	Quantity	Price
----------	-------------	--------------	----------	-------

5	L3900100-000	L3900100-000 - DIAPHRAGM SHIMS for Electronic Metering by Pulsafeeder	1	
18	L1501300-TFE	L1501300-TFE - O-RING for Electronic Metering by Pulsafeeder	1	
52	L0700102-125	PCB ASY STANDARD P 230V	1	
56	L2000300-PBT	L2000300-PBT - MALE ADJUSTMENT SHAFT for Electronic Metering by Pulsafeeder	1	
60	L1500700-NTR	L1500700-NTR - SECONDARY SEAL for Electronic Metering by Pulsafeeder	1	
62	L9700401-000	CORD ASY PWR,230 #2 HSG E+	1	
64	L9800200-188	L9800200-188 - MOUNTING SCREW STROKE LENGTH KNOB for Electronic Metering by Pulsafeeder	7	
65	L1500800-NTR	L1500800-NTR - GROMMET, STROKE RATE/SWITCH for Electronic Metering by Pulsafeeder	2	
69	L9700900-000	L9700900-000 - PIN PLUG - EXT/STOP & 4-20mA/STOP for Electronic Metering by Pulsafeeder	2	
76	L1500900-NTR	L1500900-NTR - GROMMET STROKE LENGTH for Electronic Metering by Pulsafeeder	1	
85	L9700200-000	L9700200-000 - SIGNAL CORD (EXTERNAL PACED MODELS) for Electronic Metering by Pulsafeeder	3	
92	L9700800-000	L9700800-000 - BREAKER COVER for Electronic Metering by Pulsafeeder	1	
106	L3900900-000	L3900900-000 - STROKE LENGTH KNOB KIT for Electronic Metering by Pulsafeeder	1	
107	L3901000-000	L3901000-000 - GROUND LUG KIT (CONTAINS 1 BOLT AND 3 NUTS) for Electronic Metering by Pulsafeeder	3	
108	L1900800-000	L1900800-000 - KNOB, STROKE RATE/SWITCH WITH SET SCREW for Electronic Metering by Pulsafeeder	2	