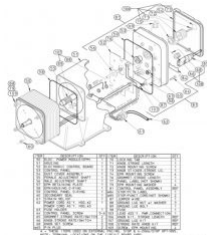
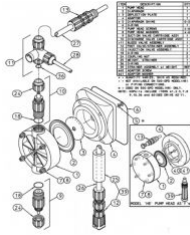


[Home](#) > [Pulsafeeder](#) > [Pulsatron](#) > [Pumps](#) > [Metering Pumps](#) > [Electronic Metering](#) > [LVB3SB-VTT5-XXX](#)

Pulsatron LVB3SB-VTT5-XXX Electronic Metering Pump

Item#: LVB3SB-VTT5-XXX | **Model#:** LVB3SB-VTT5-XXX **Series#:** LVXXXX-XXXX-XXX



Description:
 Pulsafeeder Pulsatron LVB3SB-VTT5-XXX Series HV Electronic Metering Pumps. Pump Head & Fittings/Seats & O-rings/Balls: PVC / TFE / TFE - LVB3 & F4 only

Price: **USD** ~~\$914⁰⁰~~ **\$542⁹²**

[Buy Now](#)

Technical Specification

LVB3SB-VTT5-XXX Product Specific Data

MODELS	0.50 gph / 12 gpd (1.9 lph) max pres.: 150 PSI (10 BAR)
CONTROLS	Manual On/Off
ELECTRICAL	230 Volt / 50-60Hz / 1ph with 6' (1.8m) 3-wire US Plug
LIQUID END MATERIALS:Pump Head & Fittings/Seats & O-rings/Balls	PVC / TFE / TFE - LVB3 & F4 only
CONNECTION SIZES	Tubing (S) .50" I.D. x .75" O.D. / .38" I.D. x .50" O.D. - LVB3 & F4 only
SUFFIX CODES	No Additional Options

Series Data

Pump Head Materials	GFPPL, PVC
Fitting Material Available	GFPPL, PVC
Turndown Ratio	100:1
Seat O-Rings Available	PTFE, CSPE, Viton
Balls Available	PTFE-faced CSPE-backed
Diaphragms	Clear PVC, White PE, PVDF
Tubing Available	115 VAC - 50/60 HZ -1 ph, 230 VAC - 50/60 HZ - 1 ph
Power Input	300 Watts, Average Input Power At Max SPM: 130 Watts
Peak Input Power	300 Watts, Average Input Power At Max SPM: 130 Watts
Average Current Draw	115 VAC: Amps - 1.0, 230 VAC: Amps - 0.5
Accessories	KOP Kits , Gauges , Dampeners , Pressure Relief Valves , Tanks , Pre-Engineered Systems , Process Controllers

Product Dimensions

Weight	25.00 lb
Width	289.56 mm, 11.40 in
Height	238.76 mm, 9.40 in
Length	340.36 mm, 13.40 in

Technical Documents

Document Title	Download
Product Brochure	Click Here to Download
Technical Data	Click Here to Download

Parts List

Position	Part Number	Part Details	Quantity	Price
----------	-------------	--------------	----------	-------

52	L0700102-125	L0700102-125 - ELECTRONIC CONTROL BOARD for Electronic Metering by Pulsafeeder	1	\$195.20
18	L1501300-TFE	L1501300-TFE - SUCTION/DISCHARGE O-RING for Electronic Metering by Pulsafeeder	1	\$7.50
60	L1500700-NTR	L1500700-NTR - SECONDARY SEAL for Electronic Metering by Pulsafeeder	1	\$2.80
65	L1500800-NTR	L1500800-NTR - GROMMET STROKE RATE/SWITCH for Electronic Metering by Pulsafeeder	2	\$6.00
76	L1500900-NTR	L1500900-NTR - GROMMET STROKE LENGTH for Electronic Metering by Pulsafeeder	1	\$2.20
108	L1900800-000	L1900800-000 - KNOB, STROKE RATE/SWITCH WITH SET SCREW for Electronic Metering by Pulsafeeder	2	\$9.80
56	L2000300-PBT	L2000300-PBT - MALE ADJUSTMENT SHAFT for Electronic Metering by Pulsafeeder	1	\$9.10
5	L3900100-000	L3900100-000 - DIAPHRAGM SHIMS for Electronic Metering by Pulsafeeder	1	\$10.40
64	L9800200-188	L9800200-188 - CONTROL PANEL SCREWS for Electronic Metering by Pulsafeeder	7	\$2.80
85	L9700200-000	L9700200-000 - STOP/FUNC. CORDS for Electronic Metering by Pulsafeeder	3	\$26.80
107	L3901000-000	L3901000-000 - GROUND LUG KIT (CONTAINS 1 BOLT AND 3 NUTS) for Electronic Metering by Pulsafeeder	1	\$3.90
106	L3900900-000	L3900900-000 - STROKE LENGTH KNOB KIT for Electronic Metering by Pulsafeeder	1	\$16.40
62	L9700401-000	CORD ASY PWR,230 #2 HSG E+	1	\$16.40
92	L9700800-000	L9700800-000 - BREAKER COVER for Electronic Metering by Pulsafeeder	1	\$9.80
69	L9700900-000	L9700900-000 - PIN PLUG - EXT/STOP & 4-20mA/STOP for Electronic Metering by Pulsafeeder	2	\$2.20