



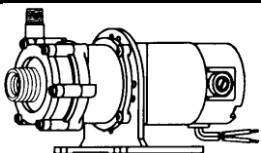
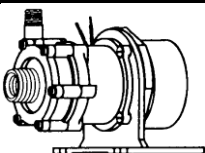
MARCH PUMPS

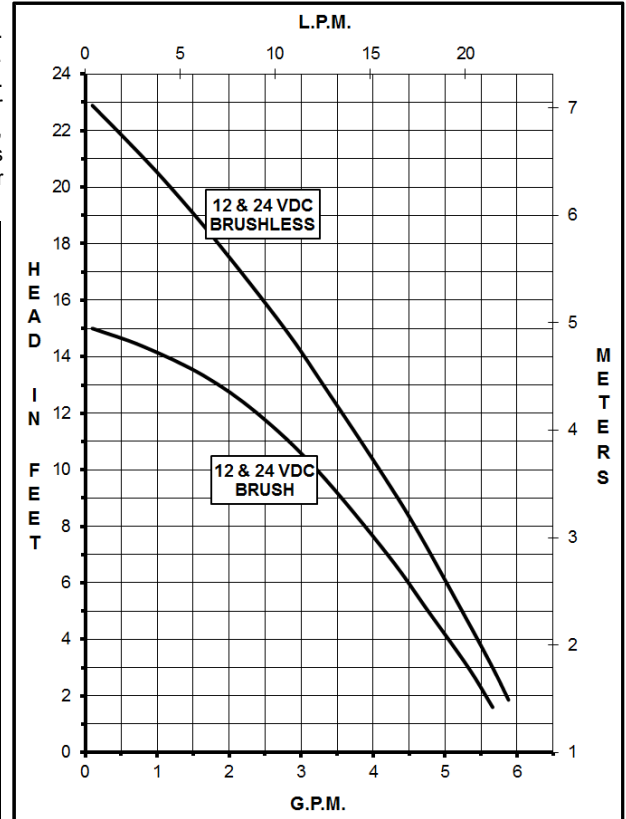
1819 PICKWICK AVE., GLENVIEW, IL 60026-1306, U.S.A
PHONE: (847) 729-5300 - FAX: (847) 729-7062
WWW.MARCHPUMP.COM

DC Brushless BC-2CP-MD DC Brush BC-2CP-MD

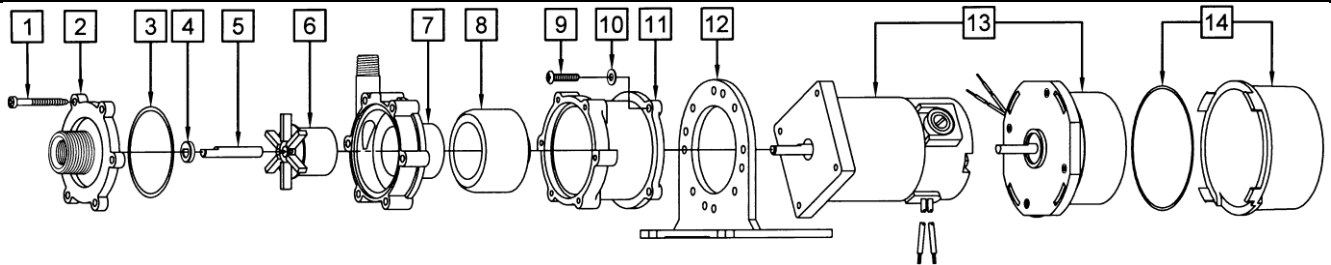
DESCRIPTION & OPERATION:

Series 2 are centrifugal magnetic drive pumps, eliminating the need for a shaft seal. Pumps can be serviced with a screwdriver. See the parts list for a breakdown of parts. Pumps are not self-priming, lack a suction lift, and thus require a **flooded suction**. Pumps **cannot be run dry** because the impeller requires the liquid being pumped for lubrication. For liquids with a specific gravity greater than water, have a higher viscosity, or for elevated temperatures, a trimmed impeller may be necessary. Brushless motors must be operated within a restricted voltage range due to the electronics. For application assistance, contact March Pump.

| SPECIFICATIONS | BC-2CP-MD (12V & 24V DC) | | | | |
|--|---|--------------------------------|---|-----------------------------|------------|
| |  | |  | | |
| | Models (Motor Style) | | Brushless | | |
| | Brush | | | | |
| | Max Flow | | 6 gpm - 22.7 lpm | | |
| Max Head | | 15 ft / 6.5 psi - 4.6 m | | 23 ft / 9.9 psi - 7 m | |
| Inlet - Outlet | | 3/8" FPT & 3/4" MPT - 1/4" MPT | | | |
| Max Internal Pressure | | 50 psi - 3.4 bar | | | |
| Max Liquid Temperature | | 190°F / 87°C | | | |
| Motor Type | | 12V DC | 24V DC | 12V DC | 24V DC |
| Watts - Amps | | 43 - 3.5 | 43 - 1.8 | 38 - 3.1 | 38 - 1.6 |
| Restricted Voltage Range | | | | 10V to 14V | 20V to 28V |
| Hp / Kw - Rpm | | 1/25 / 0.029 - 3650 | | | |
| Electrical Connection | | 9" Leads | | 12" Leads | |
| Overall Size (H x W x L) | | 4.44" x 4.50" x 7.61" | | 4.44" x 4.50" x 5.46" | |
| | | 11.2 cm x 11.4 cm x 19.3 cm | | 11.2 cm x 11.4 cm x 13.8 cm | |
| Packed Weight | | 4 lbs / 1.8 kg | | 2 lbs / 0.9 kg | |
| Materials in Contact with Solution: Polypropylene, Ceramic & Viton | | | | | |
| The red lead is positive & blue lead is negative. | | | | | |



LIMITED WARRANTY: March pumps are guaranteed only against defects in workmanship or materials for a period of one year from date of manufacture pumping water. For the complete warranty and to register online go to www.marchpump.com/warranty-registration



NOTE: When attaching the Drive Magnet to the motor shaft, position the face of the Drive Magnet 1/16 inch below the face of the Motor Bracket.

| # | DESCRIPTION | MATERIAL | SIZE (Inches) | | QTY. | Brush BC-2CP-MD | Brushless BC-2CP-MD |
|----|---------------------------|--------------------|---------------------|-----------|------|--------------------|------------------------|
| | | | Brush | Brushless | | | |
| 1 | Self-Tapping Screw | Stainless | #7-19 x 1-7/16 Lg. | | 6 | 0115-0062-1000 | |
| 2 | Cover | Polypropylene | 3/8 FPT x 3/4 MPT | | 1 | 0125-0056-1000 | |
| 3 | "O" Ring | Viton | 3/32 CS x 2-3/16 OD | | 1 | 0125-0065-1000 | |
| | | Buna N (Option) | 3/32 CS x 2-3/16 OD | | 1 | 0125-0066-1000 | |
| 4 | Thrust Washer | Ceramic | | | 1 | 0130-0028-1000 | |
| 5 | Shaft | Ceramic | | | 1 | 0125-0061-1000 | |
| | | Stainless (Option) | | | 1 | 0125-0125-1000 | |
| 6 | Impeller Encapsulated | Polypropylene | | | 1 | 0125-0087-0200 | |
| 7 | Rear Housing | Polypropylene | 1/4 MPT | | 1 | 0125-0058-1000 | |
| 8 | Drive Magnet | | 0.250 Bore | 6mm | 1 | 0125-0083-0100 | 0125-0083-0200 |
| 9 | Screw | Stainless | #8-32 x 3/4 Lg. | | 4 | 0210-0036-1000 | |
| 10 | Washer | Stainless | #8 | | 4 | 0858-0004-1000 | |
| 11 | Motor Bracket | Plastic | | | 1 | 0125-0069-1000 | |
| 12 | Base | Plastic | | | 1 | 0125-0106-1000 | |
| 13 | Motor, 12V DC | | | | 1 | 0809-0101-1000 | 0125-0127-1000 |
| | Motor, 24V DC | | | | 1 | 0809-0103-1000 | 0125-0128-1000 |
| 14 | Cover & "O" Ring (Option) | | 1/16 CS x 3 OD | | 1 | | 0125-0133-1000 |

NOTE: Contact Factory for other materials and/or parts not listed.

0125-0076-1100 R1